

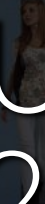


RWinvest

L1 STUDIOS

L1 STUDIOS

Construction Update
September 2018



L1 Studios 16 Fleet Street, Liverpool, L1 4AN

The latest update for L1 Studios details the progress taking place across the internals and externals of the development. A number of key tasks are 100% complete such as CP boards and beam and block flooring whilst a number of other activities are still underway as outlined below:

Works Progressed

- CP board 100% installed.
- Insulation is 40% installed with 30% materials onsite and 30% materials still set to arrive.
- Windows are 85% installed.
- The superstructure masonry is 60% complete.
- Roof is almost complete at 98%.

Internal Works

- Beam and block floors 100% installed.
- GF partitions 70% complete with some materials still due to arrive on site before full completion.
- Lift shaft blockwork is 100% complete.
- Lift cars and doors are 70% installed.
- Internal partitions on upper floors are 85% underway.
- Ceilings are being installed with 30% complete so far.
- Internal doors have commenced at 5% complete.
- MEP first fix works are 95% installed.
- MEP second fix works have started and are currently 30% complete.

If you need any further information in the meantime, please call us at the following offices:

Liverpool +44 (0)151 808 1250

London +44 (0)207 100 4141

